

# UFS

-UniFilter for collection of smoke and light dust particles

## TECHNICAL DATA

### Material

The filter house is made completely in galvanized steel and is design to be outdoors

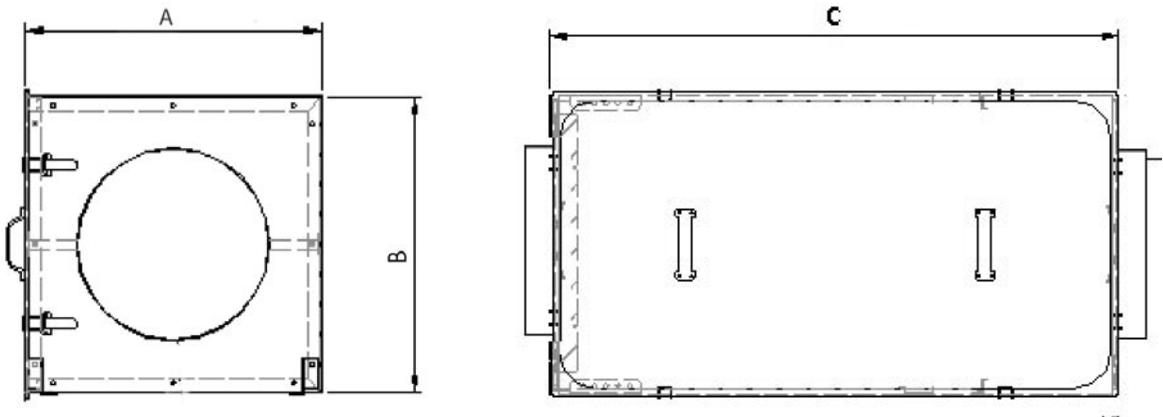
PlymoVent has a unique Cam-lock that guarantees that the mechanical seal of the filter header always is locked in place.

The positioning of the filter is always so accurate that the filter access door can not be replaced without the Cam-lock being properly positioned. This mechanism does not require the filter installer to loosen or tighten any fasteners or bolts which may expose him to the contaminated air-stream.



<b>Max airflow:</b>	5100 m <sup>3</sup> /h / 3 000 cfm
<b>Inlet size:</b>	400 mm / 16" or 250 mm / 10"
<b>Outlet size:</b>	400 mm / 16" or 250 mm / 10"
<b>Housing rating:</b>	2000 Pa / 8 InWg negative, 1500 Pa / 6 InWg
<b>Prefilter:</b>	Aluminium mesh prefilter. 610 mm x 610 mm x 50 mm / 24" x 24" x 2"
<b>Bag-filter:</b>	610 mm x 610 mm x 800 mm / 24" x 24" x 32" Area 12.5 m <sup>2</sup> / 124 Sq <sup>2</sup> . 12 Pockets. 95% ASHRAE / F8. Micro glass fiber.

## DIMENSIONAL DATA



Model	UFS-250	UFS-400
A	621mm	621mm
B	653mm	653mm
C	1271mm	1271mm
Inlet	250mm	400mm
Outlet	250mm	400mm

## ACCESSORIES

### Pressure Switch UFS-PS-KIT

For monitoring filter condition. Operating range 300 – 2 500 Pa / 1,2 – 10 InWg. Max 250V

### Mounting kit UFS-MK-1

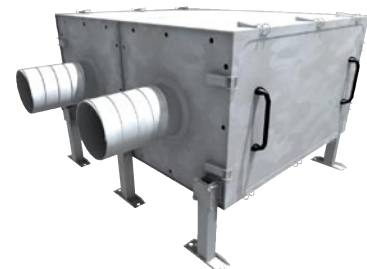
A universal leg stand for mounting the filter on the floor, ceiling or wall. Consists of 4 legs.

### Louvre UFS-L

A louvre for use when installed with positive pressure.

### Dual mounting kit UFS-MK-2

A kit for a dual filter configuration (back to back) to allow for higher airflow applications. Consists of two legs and connection brackets.



PlymoVent representative

**PLYMOVENT®**  
INTELLIGENT PROCESS VENTILATION™

*Importatore in esclusiva per l'Italia:*  
AIRUM SRL  
Via dell'Idraulico 4 - 40138 Bologna  
Tel: +39 051/60.25.072  
Fax: +39 051/53.47.78  
info@airum.com  
www.airum.com